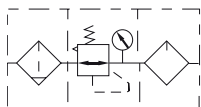


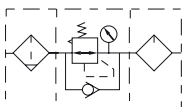


## Symbol

No reflux valve is attached



Reflux valve is attached

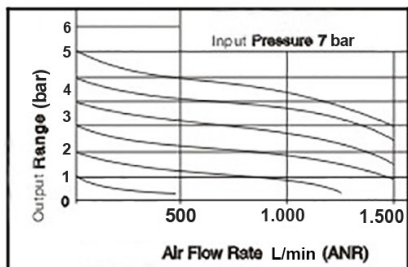


## Product feature

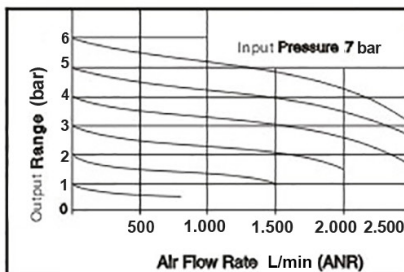
1. Quick and reliable fixation makes it convenient to install and use;
2. The performance of pressure adjustment is reliable with high precision;
3. The efficiency of eliminating moisture and solid grain is high;
4. Two drain types are available: manual drain and automatic drain.

## Pressure and feature of flow

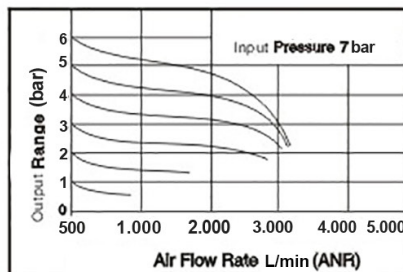
SFRL1-02



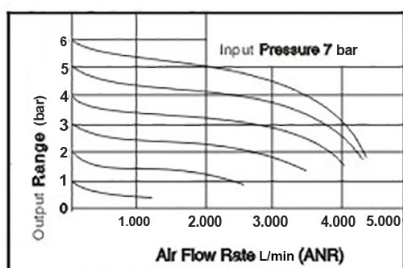
SFRL2-03



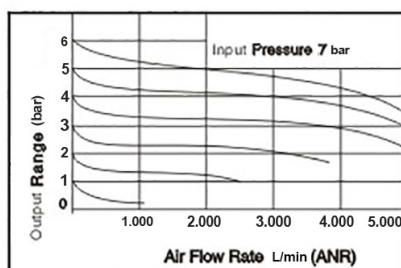
SFRL2-04



SFRL3-04



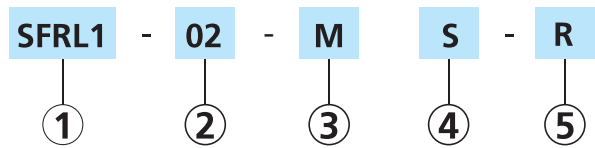
SFRL3-06



Specification

Model	SFRL1-02	SFRL2-03	SFRL2-04	SFRL3-04	SFRL3-06
Fluid	Air				
Port size	1/4"	3/8"	1/2"	1/2"	3/4"
Filtering grade	5 μm				
Pressure range	Automatic drain: 1.5 ~ 9 bar(20~130Psi)				
	Manual drain: 0.5 ~ 9 bar(7~130Psi)				
Proof pressure	15 bar(215 Psi)				
Temperature range	-20~70°C				
Capacity of drain bowl	12 ml	45 ml		80 ml	
Capacity of oil bowl	20 ml	85 ml		170 ml	
Recommended lubricant	ISO VG 32 or equivalent				

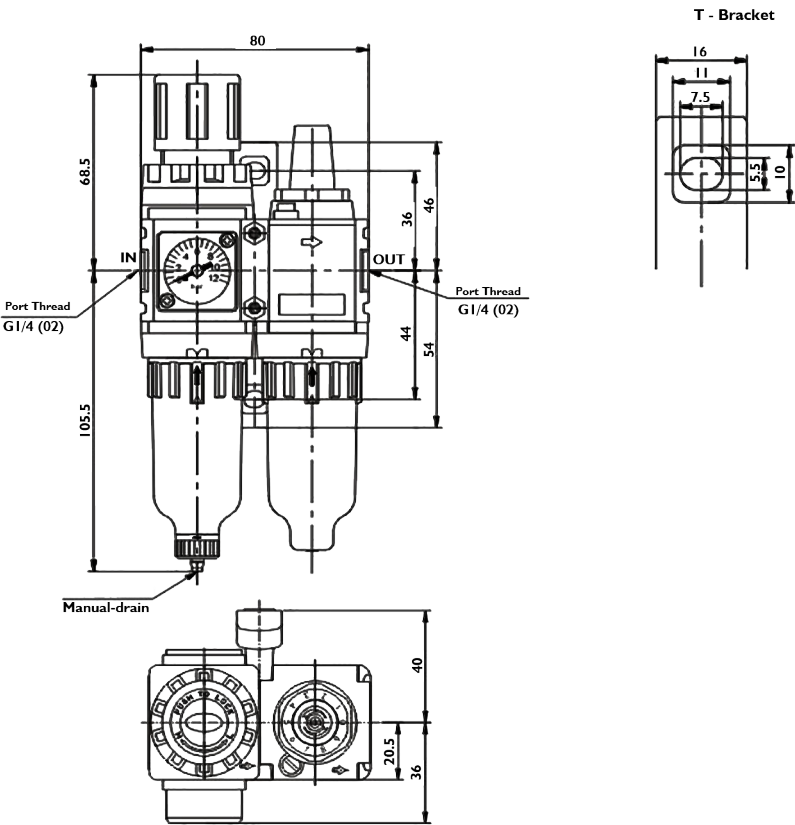
Ordering code



① <b>Model</b>	-	② <b>Port Size</b>	-	③ <b>Drain type</b>	-	④ <b>Pressure gauge</b>	-	⑤ <b>Reflux valve</b>
SFRL1: FR.L unit		02: 1/4"		M: Manual		Blank: No gauge		Blank: No reflux
SFRL2: FR.L unit		03: 3/8"		A: Automatic		S: Square		R: Reflux valve
		04: 1/2"				C: Circular		
SFRL3: FR.L unit		04: 1/2"				D: Digital		
		06: 3/4"						

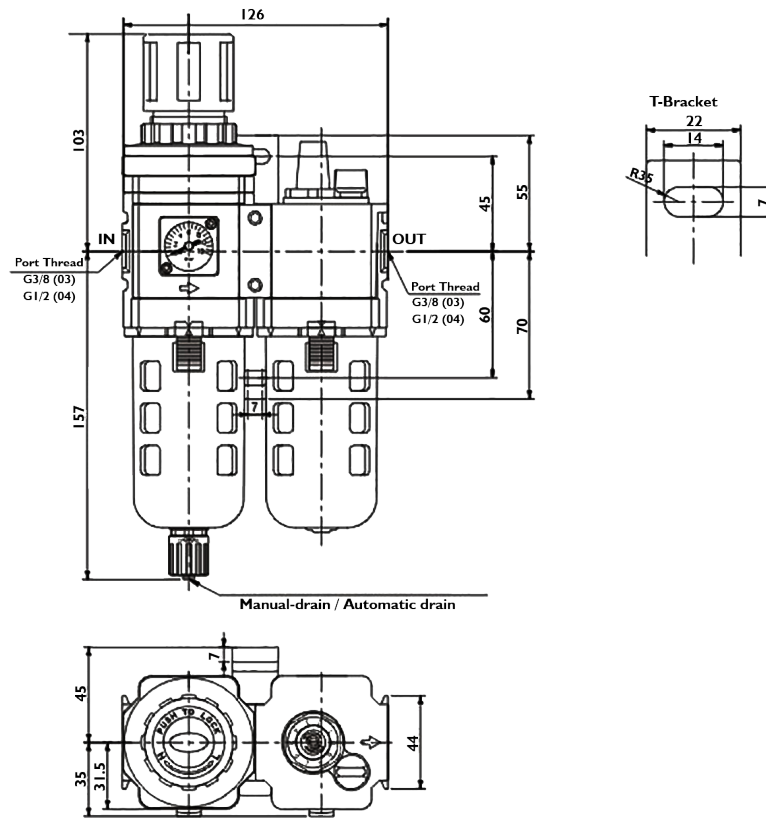
Dimensions

SFRL1



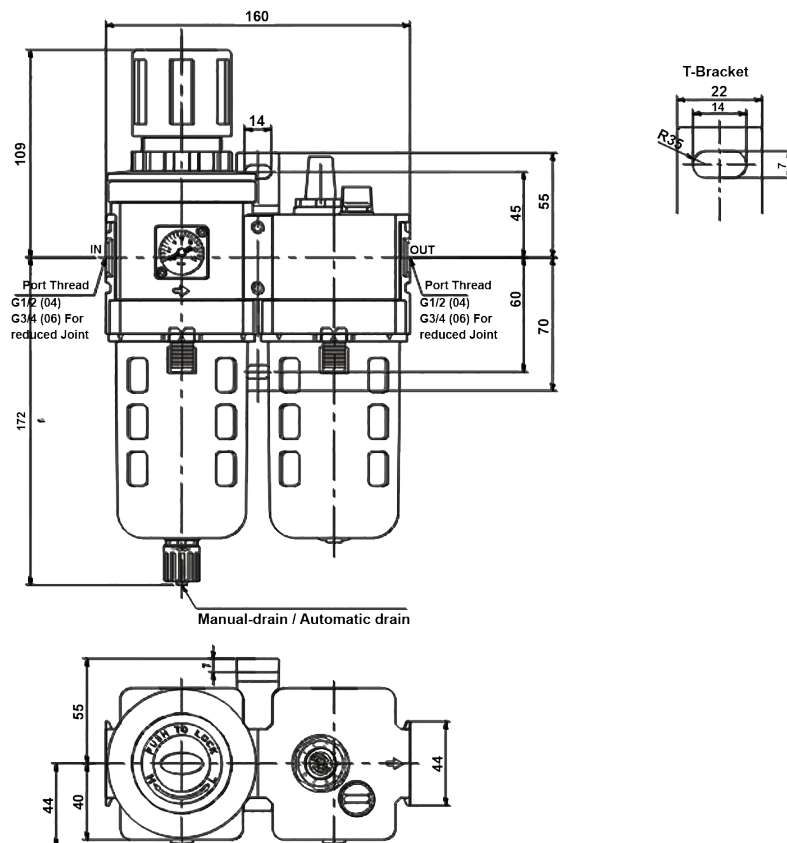
Note: Manual drain can insert ID Ø4 PU tube at drain outlet.

**SFRL2**



Note: Manual drain or automatic drain can insert ID  $\Phi$  5.5 PU tube at drain outlet.

**SFRL3**



Note: Manual drain or automatic drain can insert ID  $\Phi$  5.5 PU tube at drain outlet.